

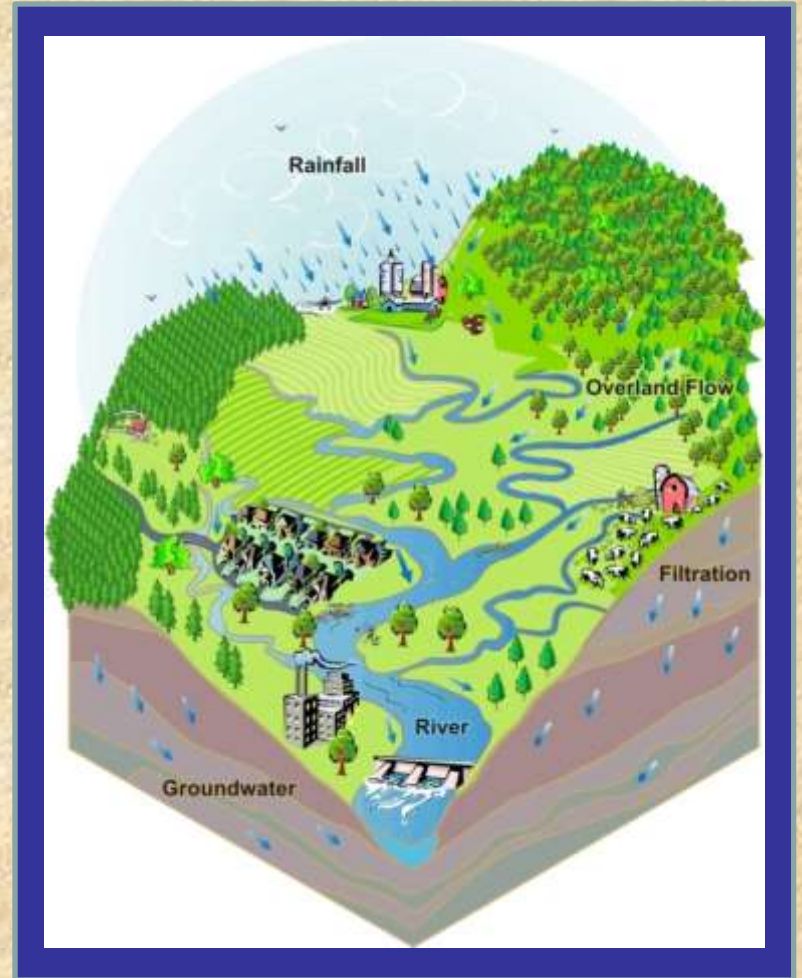


# Watershed Planning in Blackberry Creek

*We Save Land. We Save Rivers.*

# What is a watershed?

- The area of land that catches rain and snow and drains into a stream, river, lake or groundwater.
- How land is used in a watershed effects water quality.
- The watershed has become the planning and management unit of choice for many water resource issues.



1982



# Issues of concern



FOUNDED 1977



# Issues of concern



FOUNDED 1977



# Issues of concern



FOUNDED 1977





# Issues of concern



FOUNDED 1977





# Issues of concern





# Issues of concern





## Watershed Planning:

- Involves local stakeholders, and facilitates partnerships to protect and improve the health of the watershed.
- Addresses problems that go beyond political and geographical boundaries – problems that are often too costly and complex for just one.
- Creates a useful plan with specific problems and solutions (so stakeholders can apply for grant money to implement projects).



FOUNDED 1977



CMAP

## A watershed plan...

- Recommends voluntary methods to protect and enhance water quality.
- Develops an action plan for restorative and preventative efforts.
- Addresses point and nonpoint source pollution issues.
- Focuses on a waterway and its tributaries.



## A watershed plan is **NOT**...

- a legally binding document
- a means to designate land uses
- a required part of local comprehensive plans
- a comprehensive plan
- a zoning map
- a land-use map



1982



# Nine Elements of Watershed Plans



1. Identify and quantify causes and sources of impairments.
2. Estimate expected load reductions following implementation.
3. Identify BMP's needed to achieve load reductions and critical areas.
4. Estimate needed financial and technical resources.
5. Provide a public information/education component that is designed to change social behavior.
6. Include a schedule for implementing BMPs
7. Identify and describe interim measurable milestones.
8. Establish criteria to determine if load reductions are being achieved.
9. Provide a monitoring component to evaluate the effectiveness of the implementation over time for criteria in number 8.



## Regional Criteria

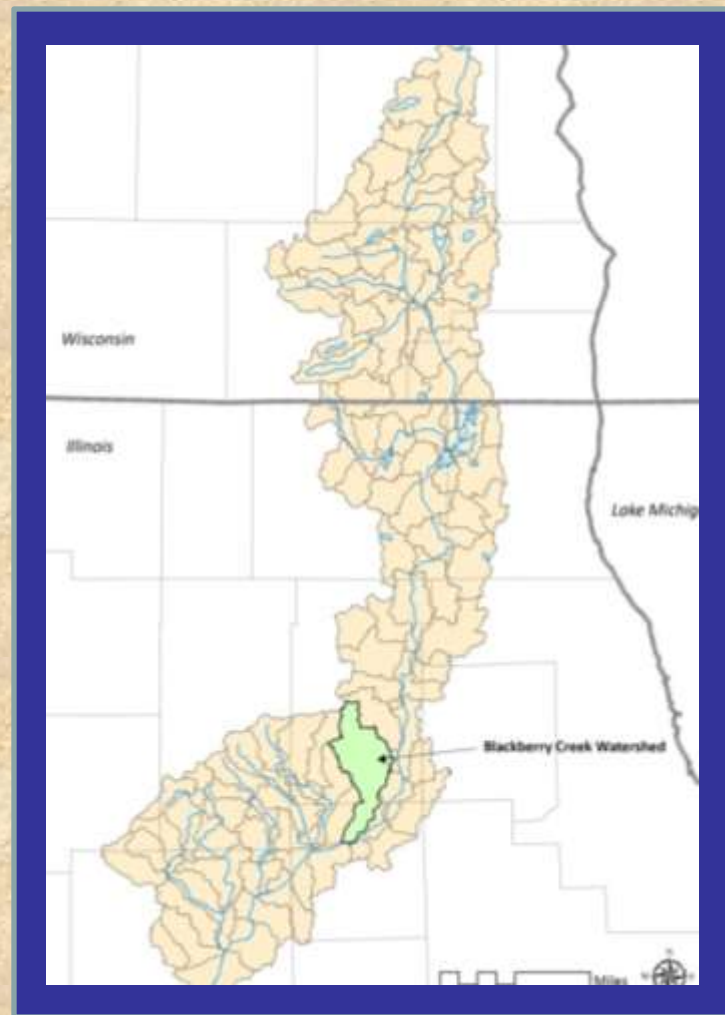
- Develop a vision for watershed land use by evaluating the collection of local comprehensive plans and estimating the cumulative impact on future water quality.
- Set target pollutant-load reductions for impaired waters taking into account both point- and nonpoint sources.
- Consider groundwater protection from both water quality and water quantity perspectives.
- Compare municipal codes and ordinances with the US EPA developed Water Quality Scorecard.





# The Fox River Basin

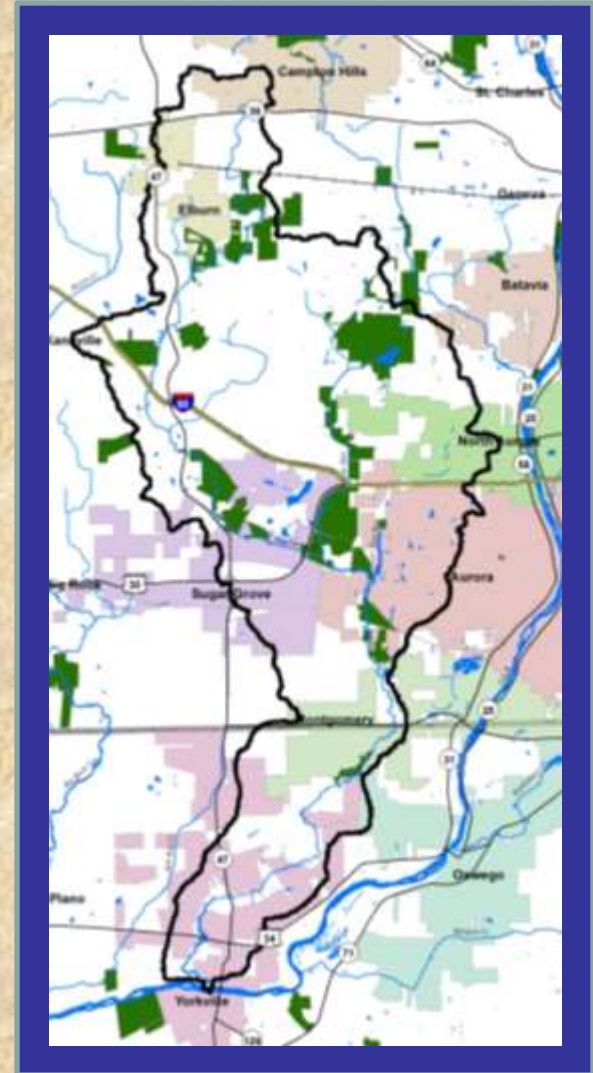
- Third-largest tributary to the Illinois River.
- Abundant recreational opportunities and high quality natural resources attract population growth.
- Segments found nonsupport for: primary contact, aquatic life, fish consumption, public water supply.
- Urban development and agriculture contribute to impairments.



FOUNDED 1977

# Blackberry Creek Watershed

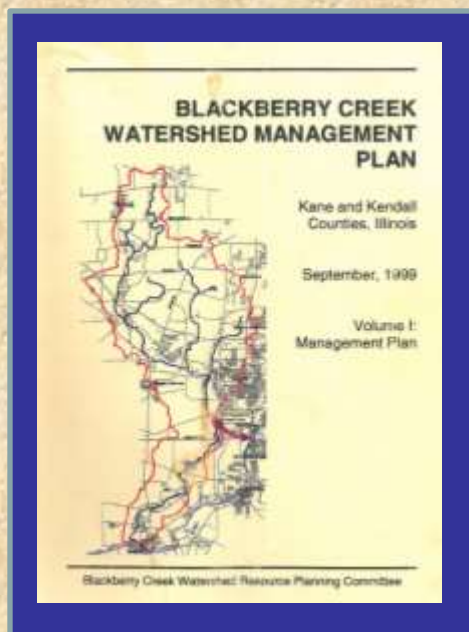
- Quality of Lower Fox River Basin gives context for our watershed.
- 32 miles; 73 sq. miles
- 56% agricultural
- 25,374 population
- Kane & Kendall Counties
- Aurora, Elburn, Montgomery, North Aurora, Sugar Grove, and Yorkville



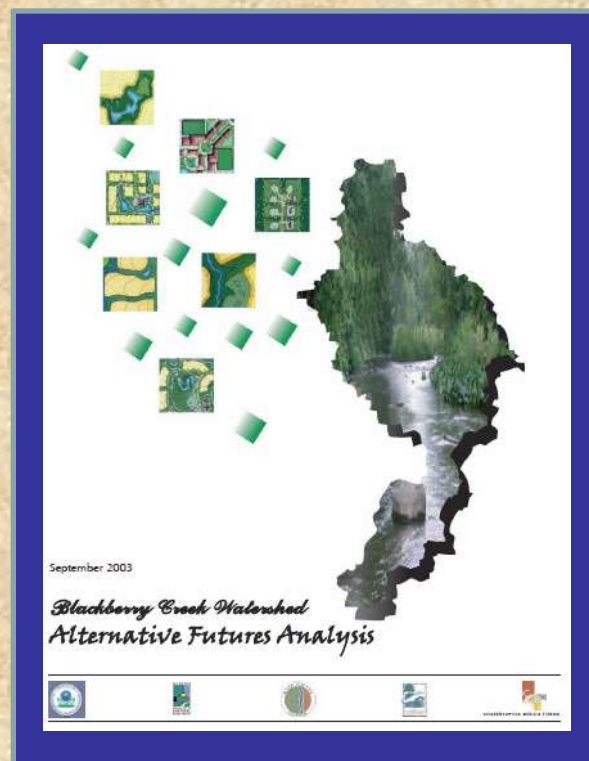
FOUNDED 1977



# Blackberry Creek Watershed *Previous Plans*



Blackberry Creek Watershed  
Management Plan - 1999



Blackberry Creek Watershed  
Alternative Futures Analysis  
2003



# Blackberry Creek Watershed *Conditions*

- Fully supporting for aquatic life.
- Not supporting for primary contact due to fecal coliform.
- Not assessed for secondary contact, fish consumption, or aesthetic quality.
- Flooding.
- Problem: poor water quality
- Pollutants: Fecal coliform, chlorides
- Stressors: low dissolved oxygen, lack of habitat



2008-2011





## **Illinois Environmental Protection**

(IEPA), Bureau of Water, awarded a grant to the Chicago Metropolitan Agency for Planning (CMAP) to

complete the watershed plan through section 604(b) of the Clean Water Act.

**The Chicago Metropolitan Agency For Planning** is the official regional planning organization for the northeastern Illinois counties of Cook, DuPage, Kane, Kendall, Lake, McHenry, and Will.



**Chicago Metropolitan  
Agency for Planning**

*We Save Land. We Save Rivers.*

## CMAP Contracted With:

### **The Conservation Foundation (TCF) –**

A local not-for-profit land and watershed protection organization, established in 1972. TCF is providing planning coordination and technical assistance.



### **The Fox River Ecosystem Partnership (FREP) –**



One of 41 partnerships of the Illinois Department of Natural Resources' Partners for Conservation Program, established in 1996. FREP is providing outreach and education.

*We Save Land. We Save Rivers.*



ESTABLISHED 1972

CMAP



# BBC Watershed Plan Timeline

Date	Meeting Agenda
September 2010	Introductions/ Project purpose
October 2010	Watershed Plan Goals and Objectives
November 2010	Watershed Vision
December 2010	Groundwater Protection
January 2011	Ordinance Review Exercise
February 2011	Open Space/ Green Infrastructure Framework
March 2011	Review of Plan Chapter 1/ Impairments/Ordinance Analyses
April 2011	Review of Watershed Inventory Chapter/ FORTRAN (HSPF) pollutant-load model/Load-reduction targets



# BBC Watershed Plan Timeline

Date	Meeting Agenda
May 2011	Plan recommendations/ Project selection
June 2011	Plan recommendations/ Project selection
July 2011	Plan recommendations/ Tech and financial assistance needs
August 2011	Public education components
September 2011	Monitoring and Assessment chapter
October 2011	Implementation schedule/ Measurable milestone and successes
November 2011	IEPA feedback/ Finalization of remaining issues
December 2011	Final draft plan approval/ Next steps





## How can I be involved?

- Participate in the planning process by attending monthly stakeholder meetings.
- Provide input and information
  - Comprehensive Plans
  - Ordinances
  - Maps
- Adopt the completed plan and integrate its recommendations as appropriate.



To receive monthly meeting announcements, or if you have questions, please contact Tara Neff: 630-428-4500 x 23; [tneff@theconservationfoundation.org](mailto:tneff@theconservationfoundation.org).

